

## Using your paper cart is easy!

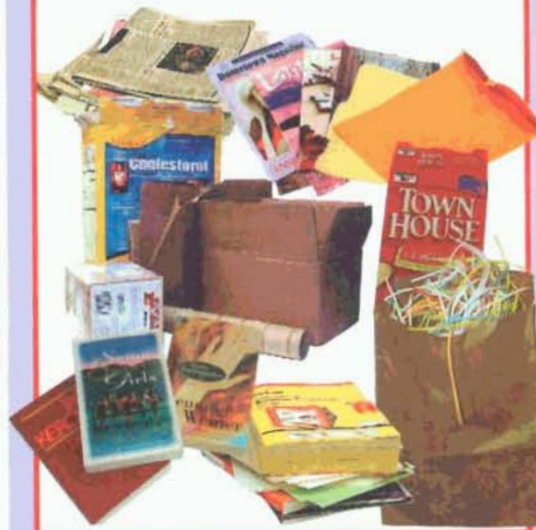
- Put all paper and cardboard in the cart.
- Flatten boxes so they fit in the cart.
- It is better to overfill the cart than to place cardboard next to the cart.
- Put shredded paper in small boxes or paper bags before placing in your cart.
- Place your cart curbside by 6am.
- **The lid opening must face the street.** If not, when the automated arm lifts the cart "backwards", it may break your lid.



## What can you put in the cart?

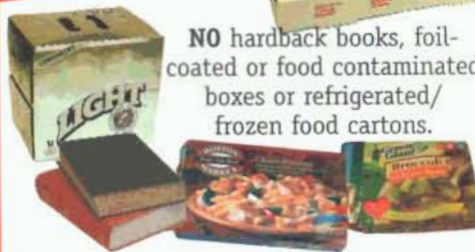
**Paper and Cardboard ONLY!**

**READ THE LABEL ON THE INSIDE OF THE CART LID.**



**DO NOT RECYCLE**

NO hardback books, foil-coated or food contaminated boxes or refrigerated/frozen food cartons.



## Common paper cart questions

**Q: Is my recycling day changing?**

**A: NO**



**Q: Can I put bottles, cans and cartons in my cart?**

**A: NO** - A different truck collects them. Keep using your recycling bucket for bottles, cans and cartons; you can recycle juice, milk and soup paper cartons, but **put them in your bucket** with bottles and cans.

**Note: Carts that contain trash or bottles, cans or cartons will NOT be emptied!**

**Q: Can I put plastic bags in my cart?**

**A: NEVER** - Do not put paper in plastic bags... use **paper** bags or cardboard boxes.

**Q: Where should I put my cart?**

**A:** Keep **at least** 2 feet of clear space around your cart. Avoid utility poles, mailboxes, fire hydrants, trees, cars, trash and recycling containers. Place your cart within 1 foot of the curb.

**The metal bar should face the street, with wheels facing the curb.**

**Q: What about large boxes like appliance or furniture boxes?**

**A:** Consider using your town dropoff. If necessary, fold or cut boxes to fit in the cart. If you must, set them next to the cart. *Do not set boxes or paper on top of cart lid.*

**Q: Why are the carts so large?**

**A:** The carts must hold all your paper and cardboard, even the larger amounts that come with the holidays. More importantly, by the end of next year, you should also be able to put bottles and cans into your blue cart.

**Q: Is it possible to recycle pizza boxes?**

**A:** If your pizza box has **no** grease on it and **no** food particles, you may recycle it.

## Bordentown Township

**To get a different size cart or to report a damaged or stolen cart, call (609) 291-2133 or email [k.wolverton@bordentowntownship.com](mailto:k.wolverton@bordentowntownship.com)**

The carts are tracked by serial number and are township property.

**RESIDENTS ARE RESPONSIBLE FOR CART DAMAGE RESULTING FROM MISUSE OR NEGLIGENCE.**

**Moving?**

**Leave your cart behind!**

Residents may be fined for taking carts to another property. If you move, the cart must stay.

**Please remember... Recycling is the law and it saves tax dollars!** Last year, you and your neighbors in Bordentown Township recycled 1,014 tons and saved \$72,219.



Designed at Burlington County College

PRINTED ON RECYCLED PAPER

**Your paper recycling cart is here!**



**Set it out for recycling on your next collection day.**

- The paper recycling carts are now used in 80,000 homes in our county.
- Homes with carts recycle up to 100 lbs more of paper each year, because carts make recycling easier and neater.
- More recycling means less of your tax dollars spent on landfill fees.
- The cart program has come to your neighborhood.
- You must use your cart for all your paper and cardboard.
- Find the important details inside.
- Keep using your bucket for bottles, cans and cartons.